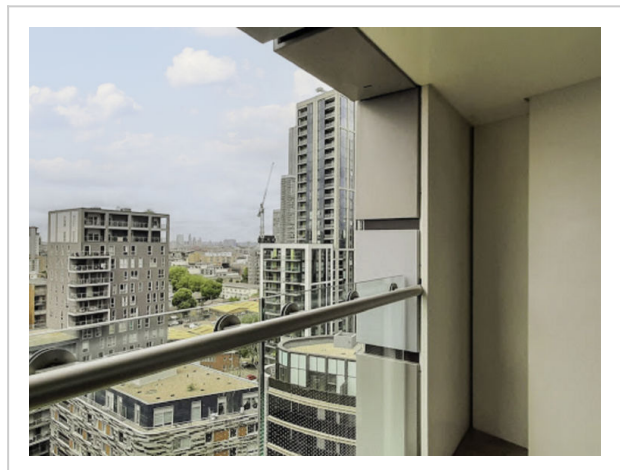
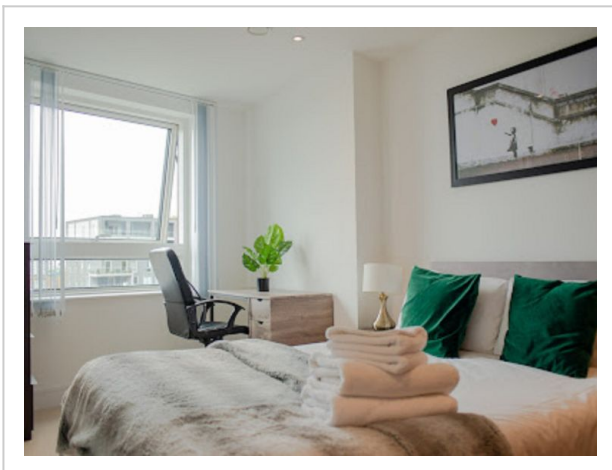
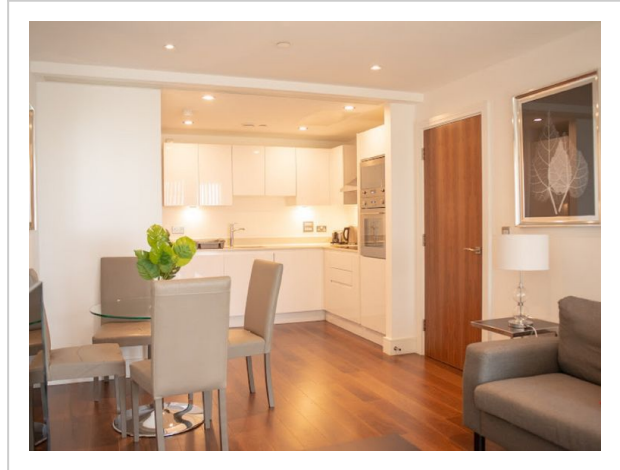
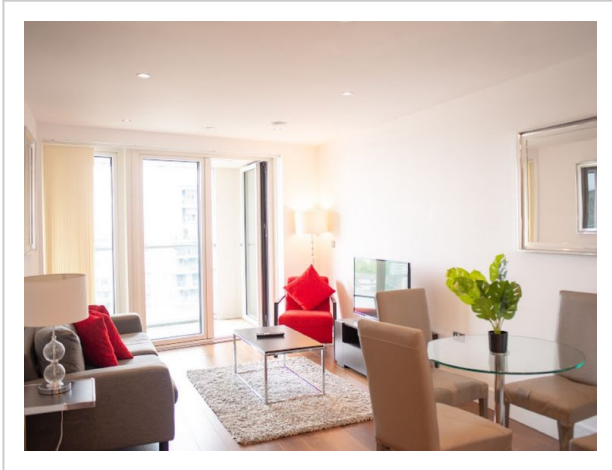


Lincoln Plaza, Canary Wharf, Greater London, United Kingdom, E14 9BU



Address: Canary Wharf, Greater London, United Kingdom, E14 9BU

Bedrooms: 1 Bathrooms: 1

Outside

Modern apartment block "Lincoln Plaza". On the outskirts, 1 km from the centre of Canary Wharf, in a central position. In the house: fitness room (extra). Lift, central heating system, laundry (extra). Room cleaning weekly (included). Breakfast (extra). Bus stop "Hutchings Street" 650 m, railway station "Canary Wharf" 1 km, underground station "Canary Wharf" 1 km. Nearby attractions: Billingsgate market 2 km, O2 Arena 4 km, London Eye 9 km, Greenwich market 8 km, Tower of London & Tower Bridge 5 km, Buckingham Palace 10 km. Please note: reception open 09:00-17:00 hrs. Baby equipment (extra), childminding (extra). Please note: 24hr guard. Guarded residence. The photograph

shows a typical example.

Inside

"Lincoln Plaza", 2-room apartment 40 m2. Modern and stylish furnishings: living/dining room with dining table and TV (flat screen). 1 double bedroom with 1 double bed and bath/shower/WC. Open kitchen (4 hot plates, oven, dishwasher, toaster, kettle, microwave, freezer). Heating. Wooden floors. Small balcony. View of the city. Facilities: hair dryer. Internet (WiFi, free). Please note: non-smoking house. TV only EN.

Amenities:

- Bath And Shower
 - Breakfast
 - Central
 - Cleaning
 - Dishwasher
 - Elevator
 - Fitness
 - Metropolis
 - Microwave
 - Oven
 - Shower
 - Nightlife Summer
 - Modern
 - Nightlife Winter
 - Fire Extinguisher
 - Fridge
 - Hair dryer
 - Heating
 - Interior Modern
 - Internet
 - Kettle
 - Open Kitchen
 - Balcony
 - Freezer
 - Nonsmoking
 - TV
 - Stove
 - Toaster
 - Wlan
-